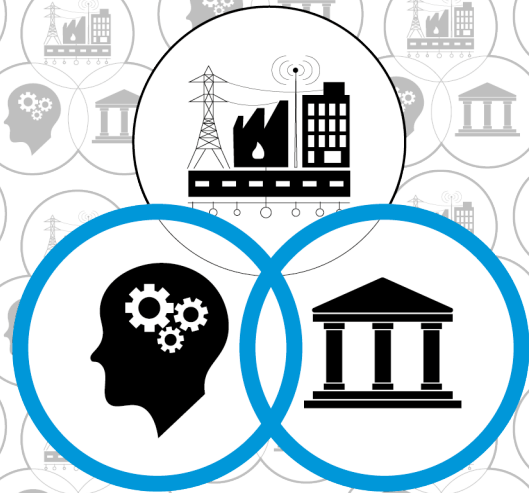


# CAPACITY ASSESSMENT TOOL FOR INFRASTRUCTURE



## HIGHLIGHTS

The Capacity Assessment Tool for Infrastructure (CAT-I):

- Identifies the gaps in a country's capacity to plan, deliver, and manage infrastructure systems;
- Looks at cross-sector issues (e.g. skills, procurement, legal);
- Supports the identification of a pipeline of projects to build capacity; and
- Can be used at different levels of government.

## KEY FEATURES

- Online platform
- Built-in guidance
- Multilingual support (2019)

## PILOT PROJECTS

UNOPS has piloted CAT-I in collaboration with governments in:

-  Mato Grosso State, Brazil
-  Serbia
-  Nepal

Additional assessments are underway in Grenada and Turkana County, Kenya.

## A TOOL FOR BETTER INFRASTRUCTURE

UNOPS developed the Capacity Assessment Tool for Infrastructure (CAT-I) to help countries facilitate better infrastructure development. The tool is designed to help governments develop sustainable, resilient, human-centred, and inclusive infrastructure by identifying gaps in their capacity to plan, deliver, and manage their infrastructure systems.

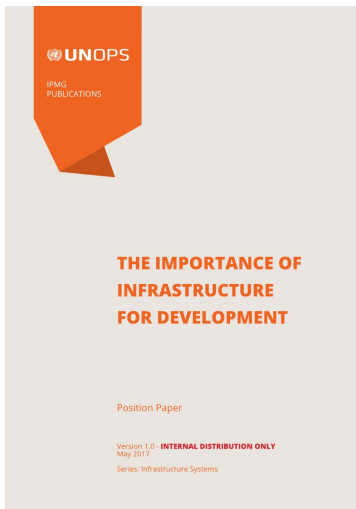
### Approaching infrastructure as a system

UNOPS approaches infrastructure as a system composed of assets, institutions, and knowledge that provide a society its services. As a result, UNOPS has been developing a series of tools to support governments assess these different components. CAT-I will be used to understand the capacity component of infrastructure systems, focusing on institutions and knowledge. The tool supports governments in improving their capacity to plan, deliver, and manage their infrastructure systems.

### Supporting governments

The tool supports governments by identifying gaps in the planning, delivery, and management of their infrastructure systems. Based on these gaps, the tool can be used to help develop a pipeline of projects to undertake focused on building national capacity by using technical and advisory support. The tool is designed to perform in depth assessments of multiple infrastructure sectors simultaneously.

UNOPS developed the tool over the last year through a rigorous review of current literature, interviews with key experts in the field, and pilots in several regions.



*CAT-I is just one of several tools and publications being developed by UNOPS to support improved infrastructure planning, delivery and management.*

## UNOPS EXPERTISE

UNOPS has a proven track-record in helping partners plan, design, construct, rehabilitate, and maintain infrastructure in some of the most challenging environments around the world.

“With a strong field presence and proven technical capacity, UNOPS is not only a valuable resource for development partners, but also a key actor for national capacity development and knowledge transfer.

Magnus Lennartsson, Minister, Permanent Mission of Sweden to the United Nations

“This [CAT-I] makes too much sense; it is a dream come true.

Marko Blagojević, Director Public Investment Management Office, Serbia

## CONTACT

Geoffrey Morgan

Tel: +45 4533 7685

Email: [GeoffreyMO@unops.org](mailto:GeoffreyMO@unops.org)

[www.unops.org](http://www.unops.org)

CAT-I Info sheet  
Version 4.0 June 2018

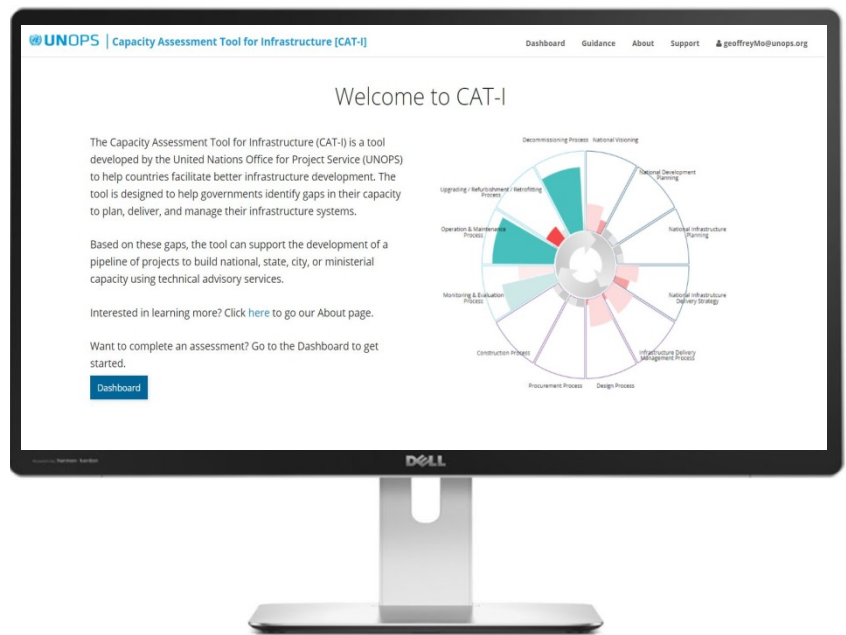


Image of the online CAT-I platform © UNOPS

## Objectives

The objectives for this new tool are to:

- Assist partner governments in identifying and understanding the gaps in their capacity to plan, deliver, and manage infrastructure; and
- Assist partner governments in identifying potential opportunities to build and address the gaps in their infrastructure planning, delivery, and management capacity.

## Outcomes

The desired outcomes of the development of the tool are to:

- Improve the infrastructure planning, delivery, and management of partner governments;
- Improve government capacity to reach development targets through the implementation of appropriate infrastructure; and
- Reduce the impact of shocks and stresses on countries through the implementation of risk-informed infrastructure development.

## Assessment process

